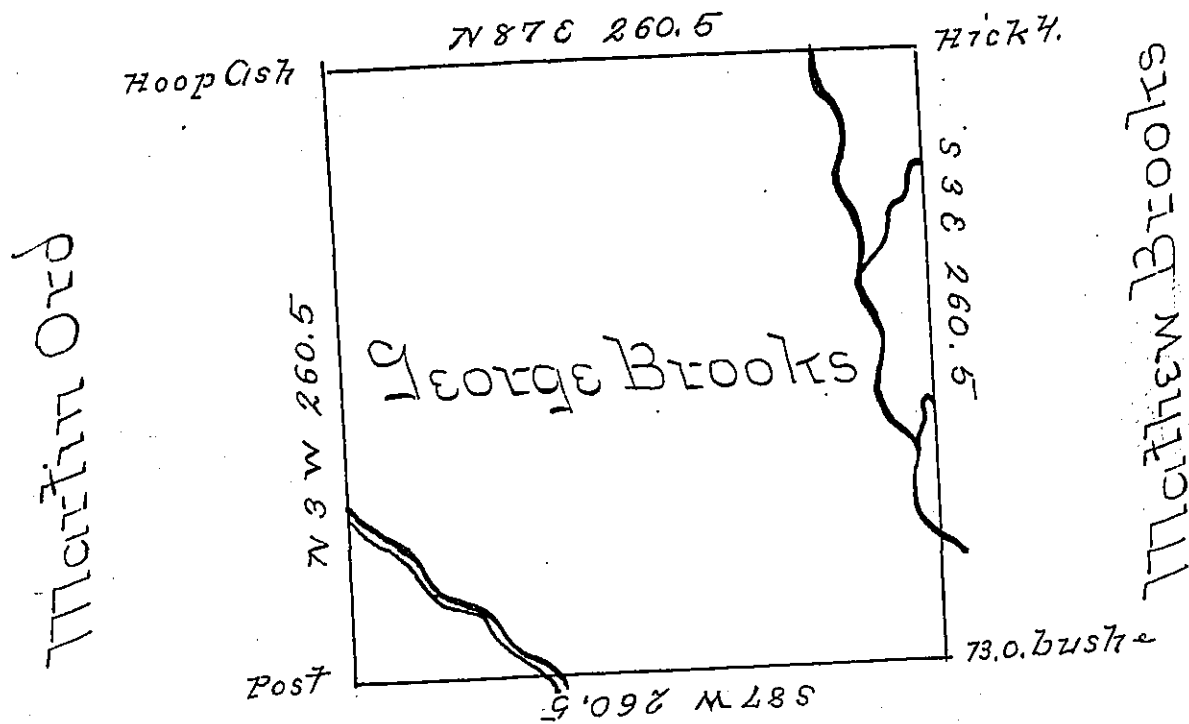


Philip All



Charles Opman

Situate on one of the North Eastern branches of  
 Beaver Creek in district No 3 Allegany County  
 containing 400<sup>acs</sup> 16<sup>ps</sup> and Allowance Surveyed the  
 7 November 1795 in Pursuance of a Warrant gra-  
 nted George Brooks 21 April 1794

Ben Stokely U.S.

Danl Brodhead Esq S.G.

Sandy Lake Township Mercer County

*IN TESTIMONY* that the above is a copy of the original remaining on file in  
 the Department of Internal Affairs of Pennsylvania, made  
 conformably to an Act of Assembly approved the 16th day of  
 February, 1833, I, have hereunto set my Hand and caused  
 the Seal of said Department to be affixed at Harrisburg,  
 this first day of December 1903.

*[Signature]*  
 Secretary of Internal Affairs.